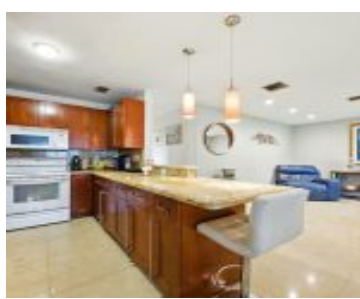
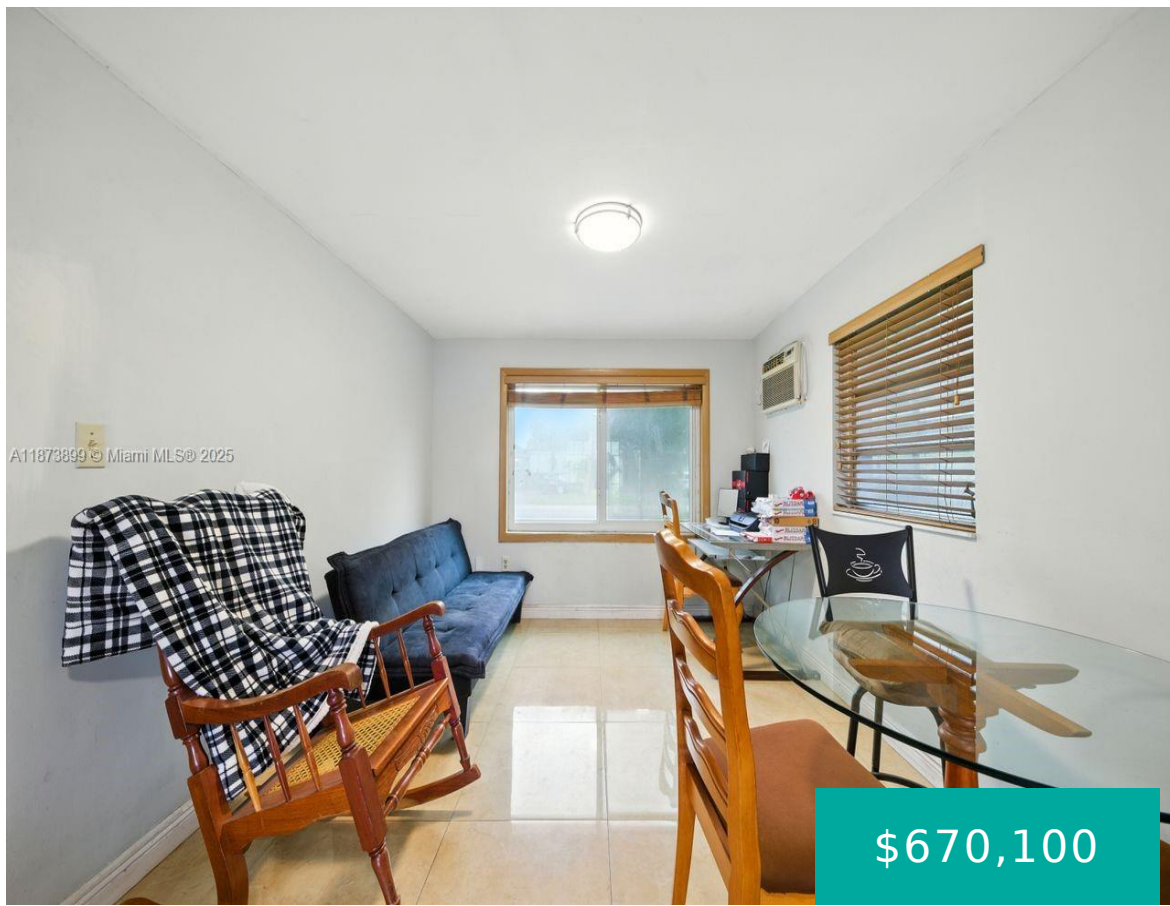


7375 34TH STREET MIAMI FL 33155 7375 SW 34TH STREET

<https://www.cays.com>



CENTRAL MIAMI PART 6 PB 17-8 LOT 25 BLK 99 LOT SIZE 50.000 X 100 OR 9590 1545 COC 22315-0828 05 2004 1 "Brand NEW ROOF, with warranty" this beautifully maintained home perfectly situated in a prime central location, offering easy access to , dining, schools, and major roads. No HOA means you have the [...]

- 3 beds
- 3, 3 baths
- Residential, SingleFamilyResidence
- Residential, SingleFamilyResidence
- Active
- 1488 sq ft



Basics



Category: Residential, SingleFamilyResidence

Status: Active

Bathrooms: 3, 3 baths

Floors: 1 floor

Lot size: 5000, 5000 sq ft

View: Garden

County: Miami-Dade

Type: Residential, SingleFamilyResidence

Bedrooms: 3 beds

Half baths: 0 half baths

Area: 1488 sq ft

Year built: 1957

Subdivision Name: CENTRAL MIAMI PART 6

Property details

Subdivision Name: CENTRAL MIAMI PART 6

Lot Size Square Feet: 5000

Parcel Number: 33155

Property Features

Parking Features: PaverBlock

Cooling Y/N: 1

Heating Y/N: 1

View: Garden

Cooling: CentralAir

Heating: Central,Electric

Pets Allowed: NoPetRestrictions,Yes

Stories: 1

Location Details

County Or Parish: Miami-Dade

Middle/Junior School: West Miami

Zoning Description: 0100

Elementary School: Emerson

High School: South Miami

Building Details



Water Source: Well
Lot Features: LessThanQuarterAcre
Construction Materials: Block

Architectural Style: Detached,OneStory
Sewer: SepticTank
Floor covering: CeramicTile, Other

Amenities & Features

Pool Features: None

Security Features: Other,SmokeDetectors

Roof: Shingle

Cooling: CentralAir

Exterior Features: Fence,Patio,StormSecurityShutters

Interior Features:
FrenchDoorsAtriumDoors,Other,Pantry,TubShower,WalkInClosets

Parking Features:
PaverBlock

Patio & Porch Features:
Patio

Window Features:
ImpactGlass

Door Features:
FrenchDoors

Heating: Central,Electric

Appliances:
Dryer,Dishwasher,Washer

Nearby Schools

Middle Or Junior School: West Miami

High School: South Miami

Elementary School: Emerson

Expenses, Fees & Taxes

Tax Annual Amount: \$2,785

Tax Year: 2025

Miscellaneous

List Office Name: Coldwell Banker Realty

Direction Faces: Southeast

Listing Terms: Conventional,FHA,VaLoan



Miscellaneous

Above Grade Finished Area: Miami, FL
Virtual Tour URL: <https://www.zillow.com/view-3d-home/c1a37bbb-58c6-4db7-b7fc-e8a19e1c3bdb?setAttribution=mls&wl=true>

Courtesy of

Office Name: Coldwell Banker Realty

