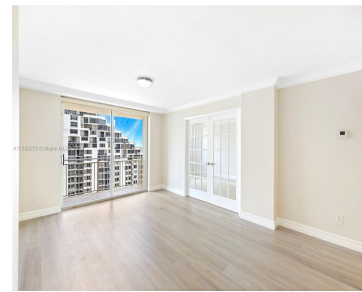
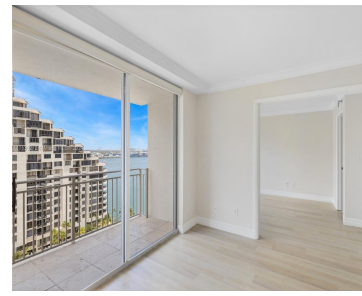
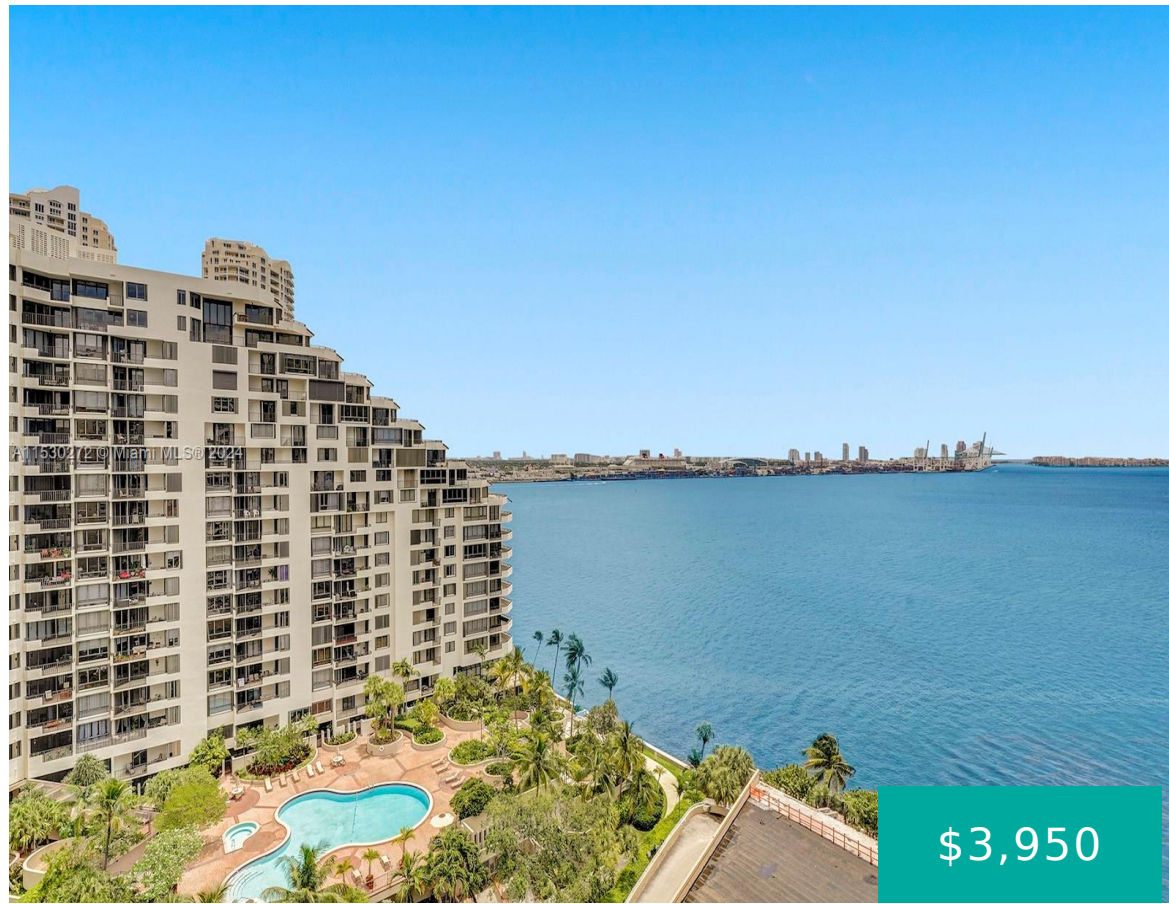


770 CLAUGHTON ISLAND DR 1703 MIAMI FL 33131

<https://www.cays.com>



Magnificent 2bed/2bath condo with beautiful bay and city views at Brickell Key! Completely renovated; new baths, new kitchen with stainless steel appliances, European style cabinets, molding, wood and marble floors. This gem has lots of natural light, split plan, 2 assigned parking spaces and new AC. Building features valet service, 24hr security, two tennis courts, [...]

- 2 beds
- 2 baths
- Condominium
- Residential Lease
- Active
- 968 sq ft

Basics

Bathrooms Full: 2

Category: Residential Lease

Status: Active

Bathrooms: 2 baths

Year built: 1990

Lot Size Units: Square Feet

Type: Condominium

Bedrooms: 2 beds

Area: 968 sq ft



Property details

Subdivision Name: ISOLA CONDO

Parcel Number: 01-42-07-004-0510

Rent Includes: Association Dues,Sewer,Water

Property Features

Community Features: Pool

Interior Features: Bedroom on Main Level,First Floor Entry,Living/Dining Room,Split Bedrooms,Walk-In Closet(s)

Window Features: Blinds

Parking Features: Assigned,Attached,Covered,Garage,Two Spaces,Valet

Appliances: Dryer,Dishwasher,Electric Range,Microwave,Refrigerator,Washer

Association Amenities: Community Kitchen,Controlled Access,Elevator(s),Fitness Center,Management,Playground,Pickleball,Pool

Cooling: Central Air

Covered Spaces: 2

Furnished: Unfurnished

Garage Y/N: 1

Heating Y/N: 1

Sewer: Public Sewer

View Y/N: 1

Entry Location: 17

Waterfront Y/N: 1

Attached Garage Y/N: 1

Exterior Features: Balcony

Waterfront Features: Bay Front,Ocean Front

Pool Features: Pool,Community

Security Features: Complex Fenced,Intercom

Architectural Style: High Rise

Construction Materials: Block

Cooling Y/N: 1

Flooring: Marble,Other,Wood

Garage Spaces: 2

Heating: Central

Pets Allowed: Conditional,Yes

View: Bay,Ocean,Water

Entry Level: 17

Patio and Porch Features: Balcony,Open,Porch

Water Source: Public

Stories: 20

Rooms & Units Description



Unit Number: 1703

Location Details

County Or Parish: Miami-Dade County

Directions: LOCATED AT BRICKELL KEY. FIRST BUILDING AT THE RIGHT SIDE AFTER YOU PASS THE SECURITY GUARD.

Fees & Taxes

Tax Legal Description: ISOLA CONDO UNIT 1703 UNDIV 968/259762 INT IN COMMON ELEMENTS OFF REC 22645-3124 COC 25160-0486 11 2006 1

Miscellaneous

Public Survey Township: 1

Public Survey Section: 7

Syndication Remarks: Gorgeous 2bed/2bath condo with bay and city views at Brickell Key! Completely renovated. Brand new amenities and 2 covered assigned parking spaces.

Year Built Details:
Resale

Virtual Tour URL: <https://www.propertypanorama.com/instaview/mia/A11530272>

Courtesy of

Office Name: Beachfront Realty Inc

