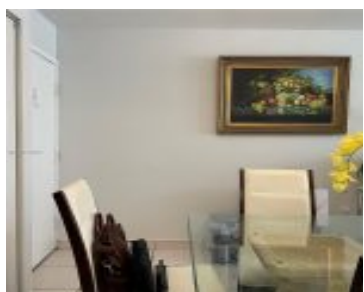
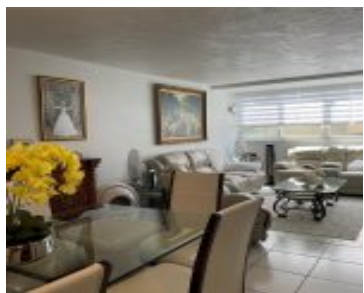


820 87TH AVE MIAMI FL 33172 820 NW 87TH AVE 213

<https://www.cays.com>



PINEBARK CONDO NO 1 UNIT 213 BLDG 820 UNDIV 1.1998% INT IN COMMON ELEMENTS CLERKS FILE 72R91109 OR 16049-4852 0893 1 F/A/U 30-3051-008-0160 Welcome to your dream condo in Miami's desirable Fontainebleau neighborhood! This spacious 1,290 sq ft, 3-bedroom, 2-bathroom unit offers sleek granite countertops, tile flooring, and an open floor plan perfect for entertaining. [...]

- 3 beds
- 2, 2 baths
- Condominium, Residential
- Condominium, Residential
- Active
- 1290 sq ft

Basics



Category: Condominium, Residential
Status: Active
Bathrooms: 2, 2 baths
Floors: 5 floors
Year built: 1972
Subdivision Name: PINEBARK CONDO NO 1

Type: Condominium, Residential
Bedrooms: 3 beds
Half baths: 0 half baths
Area: 1290 sq ft
View: Lake
County: Miami-Dade

Property details

Subdivision Name: PINEBARK CONDO NO 1

Parcel Number: 33172

Property Features

Waterfront Features: LakeFront

Cooling: Electric

Heating: Electric

Pets Allowed: Conditional,Yes

View Y/N: 1

Stories Total: 5

Parking Features: OneSpace

Cooling Y/N: 1

Heating Y/N: 1

View: Lake

Waterfront Y/N: 1

Rooms & Units Description

Unit Number: 213

Location Details

County Or Parish: Miami-Dade

Middle/Junior School: Ruben Dario

Elementary School: Hadley; Charles R.

High School: Miami Coral Park



Building Details

Construction Materials: Block

Floor covering: CeramicTile

Amenities & Features

Parking Features: OneSpace

Accessibility Features: AccessibleElevatorInstalled

Waterfront Features: LakeFront

Cooling: Electric

Furnished: Unfurnished

Interior Features:
DiningArea,SeparateFormalDiningRoom,SecondFloorEntry,TubShower

Security Features: SecurityGuard

Association Amenities:
BasketballCourt,Laundry,Storage,Elevators

Window Features: ImpactGlass,Other

Exterior Features: Other

Heating: Electric

Laundry Features: CommonArea

Nearby Schools

Middle Or Junior School: Ruben Dario **Elementary School:** Hadley; Charles R.

High School: Miami Coral Park

Expenses, Fees & Taxes

Association Fee: \$334

Tax Annual Amount: \$573

Tax Year: 2024

Fees & Taxes

Association Fee: 334

Miscellaneous



Association Fee Frequency: Monthly **List Office Name:** EXP Realty LLC

Listing Terms: Cash,Conventional

Miscellaneous

Above Grade **Virtual Tour URL:**

Finished Area: <https://www.propertypanorama.com/instaview/mia/A11651770>
Miami, FL

Courtesy of

Office Name: EXP Realty LLC

