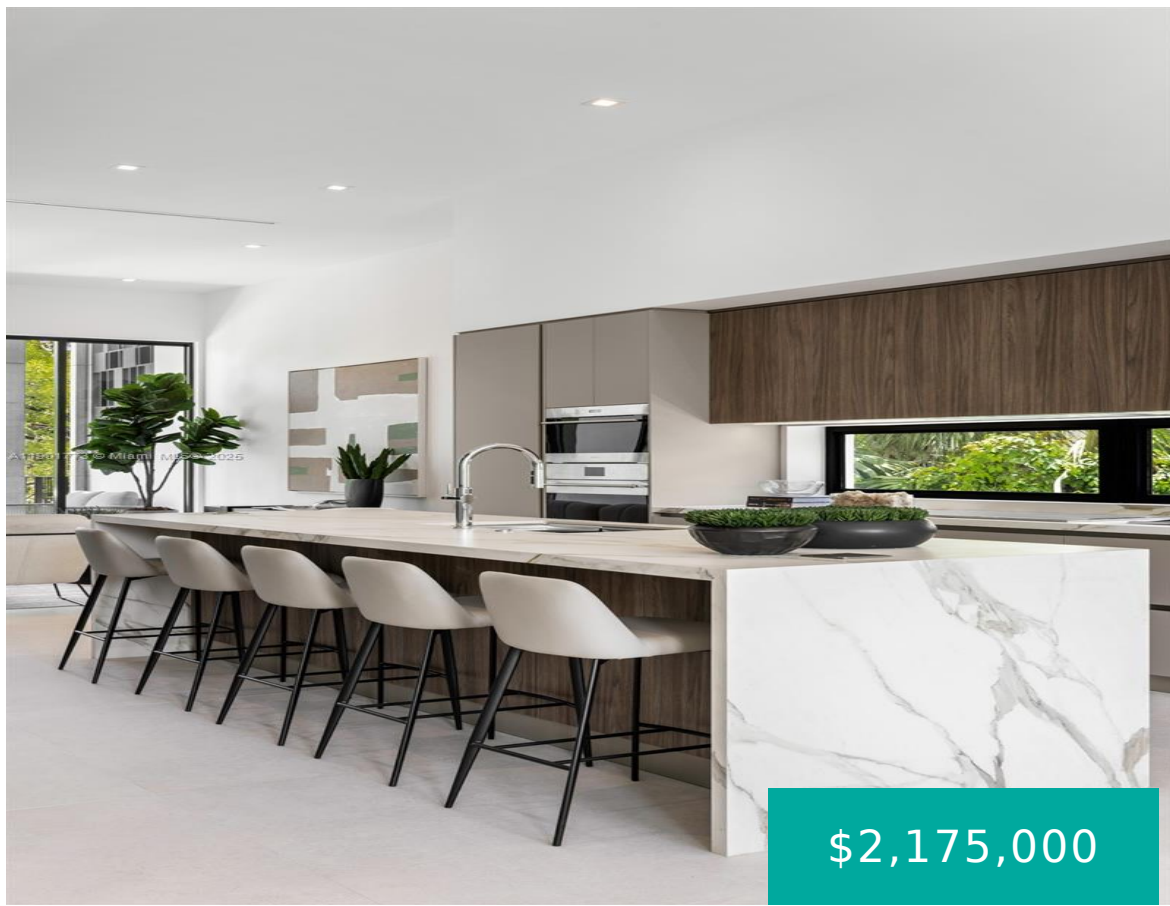
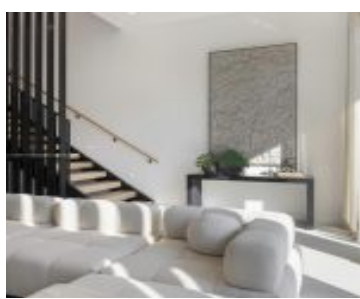


84 28TH RD MIAMI FL 33129 84 SW 28TH RD 7

<https://www.cays.com>



\$2,175,000



38-39 54 41 BRICKELL ESTATES PB 17-50 LOTS 24 TO 26 2NC BLK 12 LOT
 SIZE 75.000 X 150 OR 18758-4641 0899 2 (2) COC 25057-4359 09 2006 5
 Award-winning contemporary residence in The Roads Townhomes featuring a
 distinctive formed-concrete façade. A dramatic open stairwell, volume ceilings
 and skylight define the airy interior. The sprawling [...]

- 3 beds
- 3, 4 baths
- Residential, Townhouse
- Residential, Townhouse
- Active
- 2885 sq ft

Basics



Bathrooms Half: 1

Type: Residential, Townhouse

Bedrooms: 3 beds

Half baths: 1 half bath

Area: 2885 sq ft

View: Garden,Other

County: Miami-Dade

Category: Residential, Townhouse

Status: Active

Bathrooms: 3, 4 baths

Floors: 3 floors

Year built: 2025

Subdivision Name: BRICKELL ESTATES

Property details

Subdivision Name: BRICKELL ESTATES

Parcel Number: 33129

Property Features

Parking Features:

Attached,Covered,Garage,OnStreet,TwoOrMoreSpaces,GarageDoorOpener

Cooling Y/N: 1

Heating: Central,Electric

Pets Allowed: DogsOk,Yes

Stories Total: 3

Cooling:

CentralAir,CeilingFans,Electric

Garage Y/N: 1

Heating Y/N: 1

View: Garden,Other

Rooms & Units Description

Unit Number: 7

Location Details

County Or Parish: Miami-Dade

Middle/Junior School: Shenandoah

Elementary School: Coral Way

High School: Miami Senior



Building Details

Architectural Style: TriLevel

Covered Spaces: 2

Levels: MultiSplit

Construction Materials: Block,Other

Garage Spaces: 2

Floor covering: Hardwood, Tile, Wood

Amenities & Features

Parking Features: Attached,Covered,Garage,OnStreet,TwoOrMoreSpaces,GarageDoorOpener

Patio & Porch Features: Balcony,Open

Utilities: CableAvailable

Cooling: CentralAir,CeilingFans,Electric

Exterior Features: Balcony,Fence,SecurityHighImpactDoors

Heating: Central,Electric

Appliances:

Dryer,Dishwasher,ElectricRange,Disposal,Microwave,Other,Refrigerator,Washer

Security Features: ComplexFenced,SmokeDetectors

Association Amenities: Other

Window Features: Sliding,ImpactGlass,Skylights

Electric: Fuses

Furnished: Unfurnished

Interior Features:

BuiltInFeatures,BedroomOnMainLevel,ClosetCabinetry,DualSinks,EatInKitchen,FirstFloorEntry,GardenTubRomanTub,HighCeilings,KitchenDiningCombo,LivingDiningRoom,Skylights,SeparateShower,UpperLevelPrimary,WalkInClosets

Nearby Schools

Middle Or Junior School: Shenandoah

Elementary School: Coral Way

High School: Miami Senior

Expenses, Fees & Taxes

Association Fee: \$1,076

Tax Annual Amount: \$18,030

Tax Year: 2024

Fees & Taxes

Association Fee: 1076

Miscellaneous



Association Fee Frequency: Monthly **List Office Name:** Compass Florida, LLC

Listing Terms: Cash,Conventional **Direction Faces:** Northeast

Attribution Contact: 786-258-6733

Miscellaneous

Above Grade **Virtual Tour URL:**

Finished Area: <https://www.propertypanorama.com/instaview/mia/A11901773>
Miami, FL

Courtesy of

Office Name: Compass Florida, LLC

