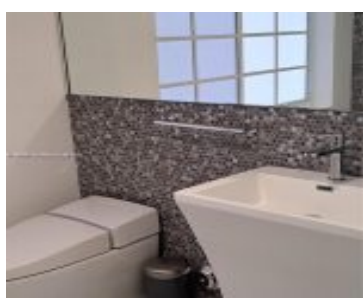
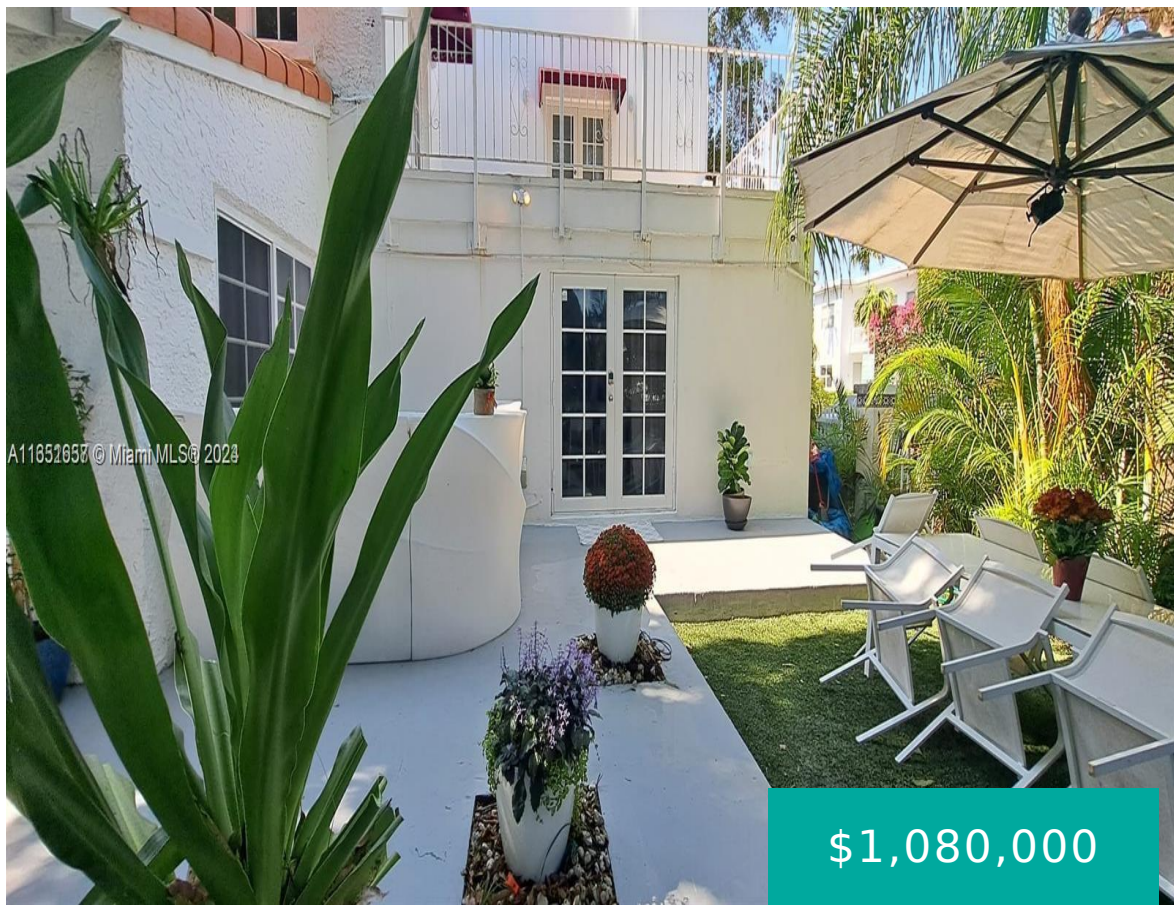


846 MICHIGAN AVE MIAMI BEACH FL 33139 846 MICHIGAN AVE 101

<https://www.cays.com>



\$1,080,000

YUBA CONDO UNIT 101 UNDIV 30.00% INT IN COMMON ELEMENTS OFF REC 23430-2704 OR 23583-4492 25027-4408 0605 1 COC 26360-4582 04 2008 1 LOW HOA! Located in the heart of SOBE, this renovated 3bed 3bath (each bed with its own bath) + guest bath is unique & one of a kind. Feels like a house [...]

- 3 beds
- 2, 2 baths
- Condominium, Residential
- Condominium, Residential
- Active
- 1284 sq ft

Basics



Category: Condominium, Residential

Status: Active

Bathrooms: 2, 2 baths

Floors: 3 floors

Year built: 1930

Subdivision Name: YUBA CONDO

Type: Condominium, Residential

Bedrooms: 3 beds

Half baths: 0 half baths

Area: 1284 sq ft

View: Garden

County: Miami-Dade

Property details

Subdivision Name: YUBA CONDO

Parcel Number: 33139

Property Features

Parking Features: Detached,Garage,OnStreet

Cooling Y/N: 1

Heating Y/N: 1

View: Garden

Cooling: CentralAir,Electric

Heating: Central,Electric

Pets Allowed: Conditional,Yes

Stories Total: 3

Rooms & Units Description

Unit Number: 101

Location Details

County Or Parish: Miami-Dade

Directions: MacArthur Causeway, take FL-907 N/Alton Rd, Merge onto FL-907 N/Alton Rd, Keep right to continue on Alton Rd, Turn right onto 9th St, Turn right at the 2nd cross street onto Michigan Ave, and then your destination will be on the right corner.

Elementary School: South Pointe

Middle/Junior School: Nautilus

High School: Miami Beach



Building Details

Architectural Style: Other

Floor covering: Other

Construction Materials: Other

Amenities & Features

Parking Features: Detached,Garage,OnStreet

Association Amenities: None

Exterior Features: Courtyard

Interior Features: BedroomOnMainLevel,FirstFloorEntry

Security Features:
ClosedCircuitCameras

Cooling: CentralAir,Electric

Heating: Central,Electric

Appliances: ElectricRange

Nearby Schools

Middle Or Junior School: Nautilus

High School: Miami Beach

Elementary School: South Pointe

Expenses, Fees & Taxes

Association Fee: \$520

Tax Year: 2023

Tax Annual Amount: \$6,660

Fees & Taxes

Association Fee: 520

Miscellaneous



Association Fee Frequency: Monthly **List Office Name:** Florida Capital Realty

Listing Terms: Conventional,Other

Miscellaneous

Above Grade

Virtual Tour URL: <https://www.youtube.com/watch?v=mwUcA7-5bv8>

Finished Area: Miami
Beach, FL

Courtesy of

Office Name: Florida Capital Realty

