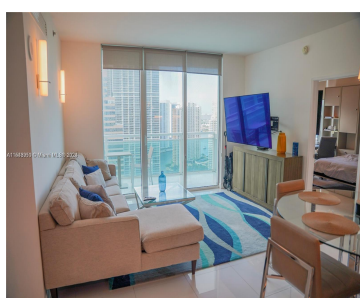
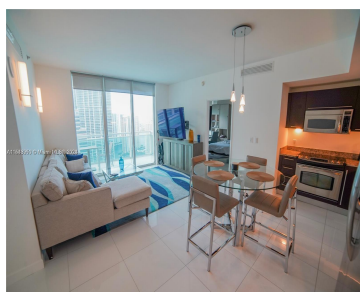


950 BRICKELL BAY DR 3506 MIAMI FL 33131

<https://www.cays.com>



\$798,000



BEAUTIFUL APARTMENT IN THE HEART OF BRICKELL...PANORAMIC WATER AND CITY VIEW...VERY BRIGHT AND COZY, PLENTY OF NATURAL LIGHT...EUROPEAN STYLE KITCHEN, PLENTY OF CABINETRY, STAINLESS STEEL APPLIANCES... LARGE WALK IN CLOSETS IN EACH BEDROOM . MURPHY BED IN THE SECOND BEDROOM/OFFICE. ...AMENITIES SUCH AS SWIMMING POOL, FITNESS CENTER, SPA, BUSINESS CENTER AND MUCH MORE...FURNITURE NEGOTIABLE...

- 2 beds
- 2 baths
- Condominium
- Residential
- Active
- 986 sq ft

Basics



Bathrooms Full: 2

Category: Residential

Status: Active

Bathrooms: 2 baths

Year built: 2008

Lot Size Units: Square Feet

Type: Condominium

Bedrooms: 2 beds

Area: 986 sq ft

Property details

Subdivision Name: THE PLAZA BRICKELL CONDO

Parcel Number: 01-41-38-146-3180

Possession: Closing & Funding

Property Features



Exterior Features: Balcony,Security/High Impact Doors

Interior Features: Closet
Cabinetry,Garden Tub/Roman
Tub,Pantry,Split Bedrooms,Separate
Shower,Walk-In Closet(s)

Waterfront Features: Bay Front,Intracoastal
Access,Other

Pool Features: Association

Parking Features: Detached,Garage,One Space

Security Features: Lobby
Secured,Smoke Detector(s)

Appliances: Built-In Oven,Dryer,Dishwasher,Electric
Range,Disposal,Ice Maker,Microwave,Refrigerator,Self
Cleaning Oven,Trash Compactor,Washer

Architectural Style: High Rise

Association Amenities: Elevator(s),Fitness
Center,Pool,Sauna

Construction Materials: Block

Cooling: Central Air

Cooling Y/N: 1

Covered Spaces: 1

Flooring: Marble

Garage Spaces: 1

Garage Y/N: 1

Heating: Central

Heating Y/N: 1

Pets Allowed: Size Limit,Yes

View: City,Water

View Y/N: 1

Entry Level: 35

Entry Location: 35

Patio and Porch Features:
Balcony,Open

Property Attached Y/N: 1

Waterfront Y/N: 1

Stories Total: 45

Utilities: Cable Available

Rooms & Units Description

Unit Number: 3506

Location Details

County Or Parish: Miami-Dade County

Fees & Taxes



Tax Annual Amount: 10906 **Tax Year:** 2023

Tax Legal Description: THE PLAZA BRICKELL CONDO **Association Fee:** 1083

Association Fee Frequency: Monthly

Association Fee Includes: Amenities,Common Areas,Cable TV,Hot Water,Insurance,Internet,Maintenance Structure,Parking,Recreation Facilities,Sewer,Security,Water

Miscellaneous

Public Survey Township: 1

Public Survey Section: 38

Syndication Remarks: TEXT BLISTING AGENT FOR SHOWING APPOINTMENTS.

Year Built Details:
Resale

Virtual Tour URL:

<https://www.propertypanorama.com/instaview/mia/A11548950>

Courtesy of

Office Name: Brickell Brokers R.E.

