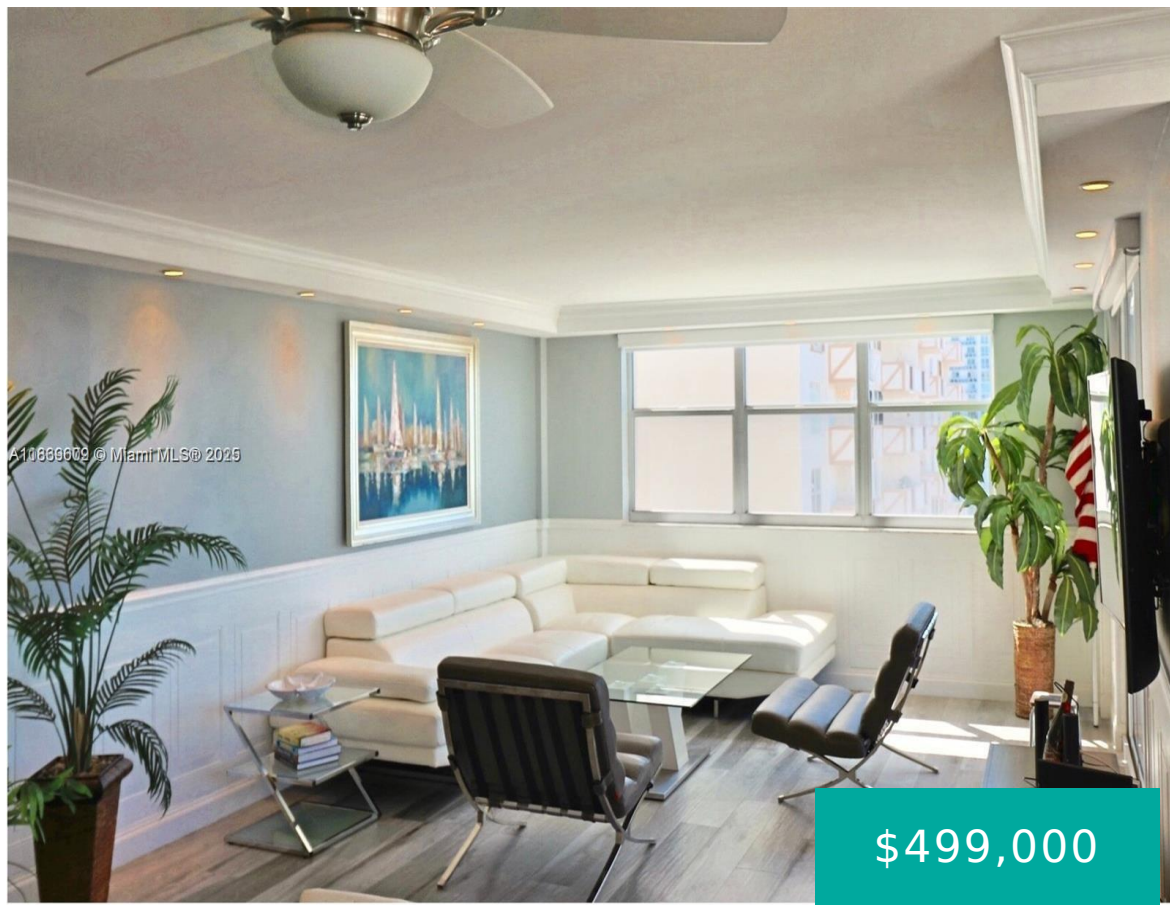


# HALLANDALE BEACH FL 33009

<https://www.cays.com>



PLAZA TOWERS SOUTH CONDO UNIT 1202 PER CDO BK/PG: 4163/702 MUST SEE DIAMOND IN THE SKY, THIS UNIT IS A RARE EXAMPLE OF PERFECTION. EVERY ASPECT OF THIS REMODELED UNIT HAS BEEN COMPLETED TO THE VERY HIGHEST STANDARD. THE MOST PICKIEST BUYER WILL FALL IN LOVE WITH THE FINISHES IN THIS PROPERTY. This corner units [...]

- 2 beds
- 2, 2 baths
- Condominium, Residential
- Condominium, Residential
- Active
- 1315 sq ft



## Basics



**Category:** Condominium, Residential

**Status:** Active

**Bathrooms:** 2, 2 baths

**Floors:** 17 floors

**Year built:** 1970

**Subdivision Name:** PLAZA TOWERS SOUTH CONDO

**Type:** Condominium, Residential

**Bedrooms:** 2 beds

**Half baths:** 0 half baths

**Area:** 1315 sq ft

**View:** Canal, Intercoastal, Ocean

**County:** Broward

---

## Property details

**Subdivision Name:** PLAZA TOWERS SOUTH CONDO

**Parcel Number:** 33009

---

## Property Features

**Building Features:** ExteriorLighting

**Parking Features:** Assigned, Covered, Guest

**Cooling Y/N:** 1

**Heating:** Central, Electric

**Pets Allowed:** No

**View Y/N:** 1

**Stories Total:** 17

**Waterfront Features:** Other

**Cooling:** CentralAir, CeilingFans

**Garage Y/N:** 1

**Heating Y/N:** 1

**View:** Canal, Intercoastal, Ocean

**Waterfront Y/N:** 1

---

## Location Details

**County Or**

**Parish:**

Broward

**Directions:** Go East on Hallandale Blvd, Turn Right on to South Ocean Drive. Building Entrance is 2nd on the right. Go up to the gate and dial the office to get entry. Guest parking is on the east side of the parking lot that abuts S Ocean Dr.

---

## Building Details



**Architectural Style:** HighRise

**Construction Materials:** Block

**Covered Spaces:** 1

**Garage Spaces:** 1

**Floor covering:** Tile

---

## Amenities & Features

**Pool Features:** Heated

**Security Features:** ComplexFenced,DoorMan,SecurityGuard

**Association Amenities:**

BilliardRoom,Clubhouse,FitnessCenter,Laundry,Pool,Trash,Elevators

**Window Features:** Other,ImpactGlass

**Exterior Features:** Balcony,SecurityHighImpactDoors,Porch

**Heating:** Central,Electric

**Laundry Features:** CommonArea

**Features:** ExteriorLighting

**Parking Features:** Assigned,Covered,Guest

**Patio & Porch Features:** Balcony,Open,WrapAround

**Waterfront Features:** Other

**Cooling:** CentralAir,CeilingFans

**Furnished:** Unfurnished

**Interior Features:**

BedroomOnMainLevel,DiningArea,SeparateFormalDiningRoom,DualSinks,EntranceFoyer,EatInKitchen,LivingDiningRoom,StackedBedrooms,WalkInClosets

**Appliances:** BuiltInOven,Dishwasher,ElectricRange,Disposal,Microwave,Other,Refrigerator

---

## Expenses, Fees & Taxes

**Tax Annual Amount:** \$7,703

**Tax Year:** 2024

---

## Miscellaneous

**Association Fee Frequency:** Monthly

**List Office Name:** Lifestyle International Realty

**Listing Terms:** Cash,Conventional,Cryptocurrency

---

## Miscellaneous

**Above Grade**

**Finished Area:**

Hallandale Beach,

FL

**Virtual Tour URL:**

<https://www.propertypanorama.com/instaview/mia/A11869609>

---

## Courtesy of

**Office Name:** Lifestyle International Realty

