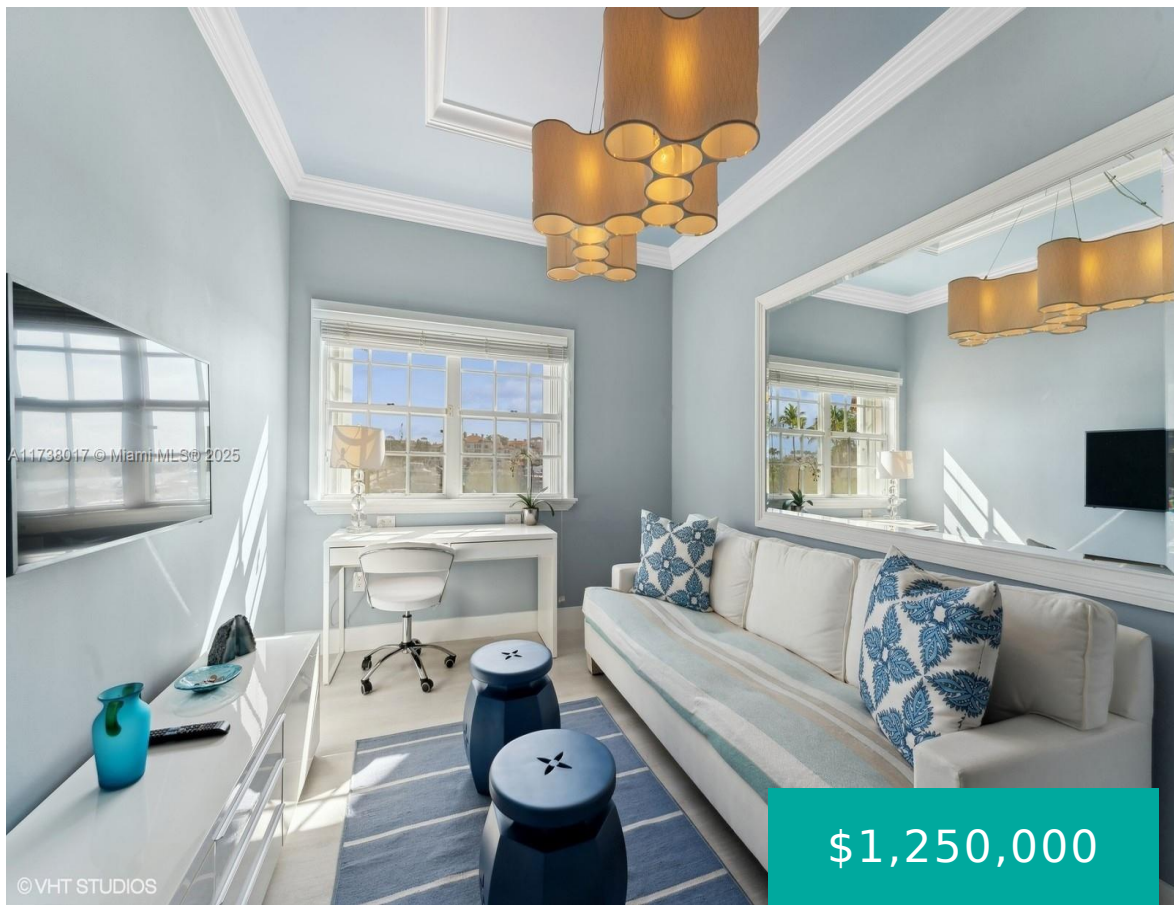


MIAMI BEACH FL 33109

<https://www.cays.com>



MARINA VLG GDNS 2 CONDO FISHER IS UNIT 40203 UNDIV 3.2001% INT IN COMMON ELEMENTS OFF REC 13875-1031 OR 19634-1711 0401 1 Perfect Sparkling Little Studio Facing the Picturesque Fisher Island Marina. Gorgeous Views Both Night and Day over this Charming and Iconic Marina. Offered Fully Furnished featuring a Separate Living Room, Kitchen, Bedroom, & [...]

- 1 bed
- 1, 1 bath
- Condominium, Residential
- Condominium, Residential
- Active
- 465 sq ft

Basics



Category: Condominium, Residential

Status: Active

Bathrooms: 1, 1 bath

Floors: 3 floors

Year built: 1988

Subdivision Name: MARINA VLG GARDENS 2 COND

Type: Condominium, Residential

Bedrooms: 1 bed

Half baths: 0 half baths

Area: 465 sq ft

View: Bay,Garden,Water

County: Miami-Dade

Property details

Subdivision Name: MARINA VLG GARDENS 2 COND

Parcel Number: 33109

Property Features

Building Features: ExteriorLighting

Parking Features:

Detached,GolfCartGarage,Open

Cooling Y/N: 1

Heating Y/N: 1

View: Bay,Garden,Water

Waterfront Y/N: 1

Waterfront Features:

OceanAccess,Other,Seawall

Cooling: CentralAir,Electric

Heating: Central,Electric

Pets Allowed: Conditional,Yes

View Y/N: 1

Stories Total: 3

Location Details

County Or Parish: Miami-Dade

Directions: I-95 to MacArthur Causeway to Fisher Island Ferry Terminal. Security Clearance is Required for Access to Fisher Island.

Elementary School: South Pointe **Middle/Junior School:** Nautilus

High School: Miami Beach

Building Details



Architectural Style: SpanishMediterranean

Construction Materials: Block

Floor covering: Other

Amenities & Features

Pool Features: Heated

Security Features: SecurityGuard

Waterfront Features: OceanAccess,Other,Seawall

Cooling: CentralAir,Electric

Furnished: Furnished

Interior Features:

BedroomOnMainLevel,SecondFloorEntry,MainLivingAreaEntryLevel,Bar

Features: ExteriorLighting

Parking Features: Detached,GolfCartGarage,Open

Association Amenities:

BasketballCourt,Marina,Clubhouse,FitnessCenter,Pickleball,Pool,PuttingGreens,Sauna,TennisCourts,Trails,Elevators

Window Features: Blinds

Exterior Features: StormSecurityShutters

Heating: Central,Electric

Appliances: ElectricRange,Refrigerator

Nearby Schools

Middle Or Junior School: Nautilus

Elementary School: South Pointe

High School: Miami Beach

Expenses, Fees & Taxes

Association Fee: \$3,622

Tax Annual Amount: \$10,910

Tax Year: 2024

Fees & Taxes

Association Fee: 3622

Miscellaneous

Association Fee Frequency: Monthly

List Office Name: Denise LeVine Realty, Inc.

Listing Terms: Cash

Direction Faces: South



Miscellaneous

Above **Virtual Tour URL:**
Grade <http://vhtbucket.s3.amazonaws.com/video/iw-avc/2025/02/04/434439389/f23ddf70-6d99-4ffc-aa03-bca6746e563d.mp4>
Finished
Area:
Miami
Beach,
FL

Courtesy of

Office Name: Denise LeVine Realty, Inc.

