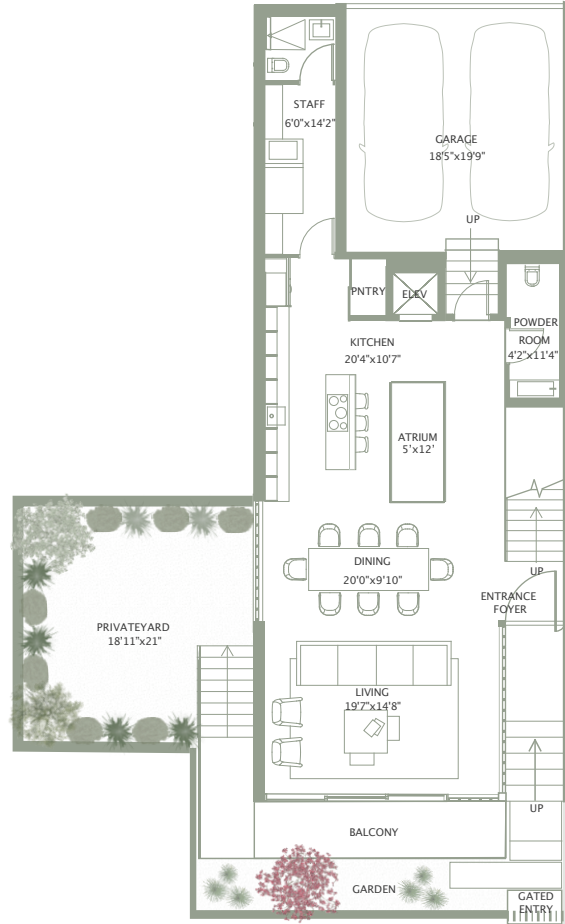
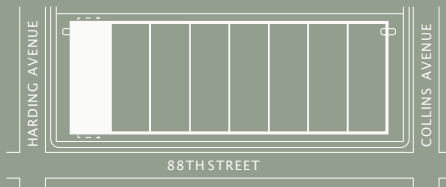


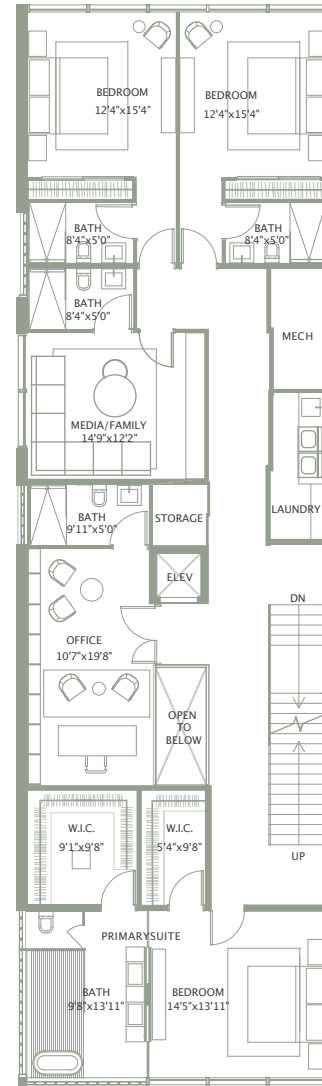
Residence 1

3 BEDROOMS +OFFICE
5.5 BATHS

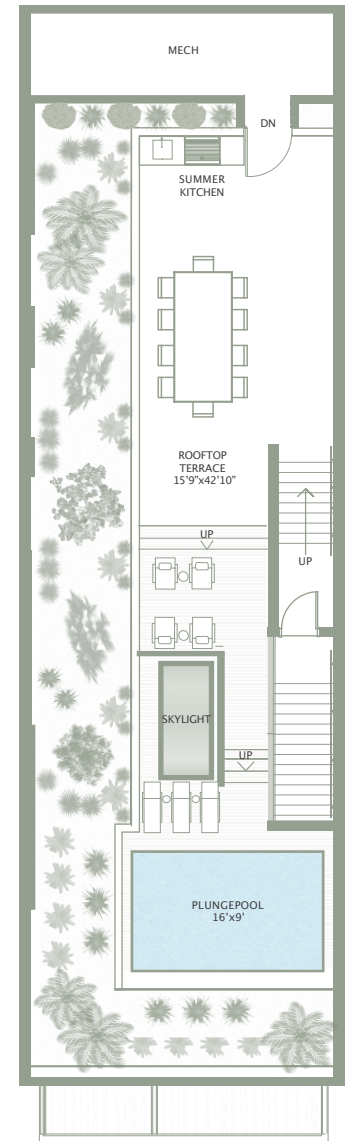
7,088SQ FT TOTAL
3,696SQ FT INTERIOR ADJUSTED
3,462SQ FT INTERIOR UNDER A/C
3,214SQ FT EXTERIOR



FIRST FLOOR



SECOND FLOOR



ROOF TO P



SCALE: 1/16" = 1'-0"
0' 4' 12' 8'

.Stated square footages and dimensions are measured to the exterior boundaries of the exterior walls and the center line of interior demising walls and in fact vary from the square footage and dimensions that would be determined by using the description and definition of the "Unit" set forth in the Declaration (which generally only includes the interior air space between the perimeter walls and excludes all interior structural components and other common elements). This method is generally used in sales material and is provided to allow prospective buyers to compare the Units with units in other condominium projects that utilize the same method. Measurements of rooms set forth on this floor plan are generally taken at the farthest points to each given room (as if the room were a perfect rectangle), without regard for any cutouts or variations. Accordingly, the area of the actual room will typically be smaller than the product obtained by multiplying the stated length and width. All dimensions are estimates which will vary with actual construction, and all floor plans, specifications and other development plans are subject to change and will not necessarily accurately reflect the final plans and specifications for the development. The project graphics, renderings and text provided herein are copyrighted works owned by the Developer. All rights reserved. Unauthorized reproduction, display or other dissemination of such material is strictly prohibited and constitutes copyright infringement. No real estate broker is authorized to make any representations or other statements regarding the project, and no agreements with, deposits paid to or other arrangements made with any real estate broker are or shall be binding on the Developer.