

888 BRICKELL

DOLCE & GABBANA

M I A M I

PENTHOUSE

FLOOR 87

ROOMS

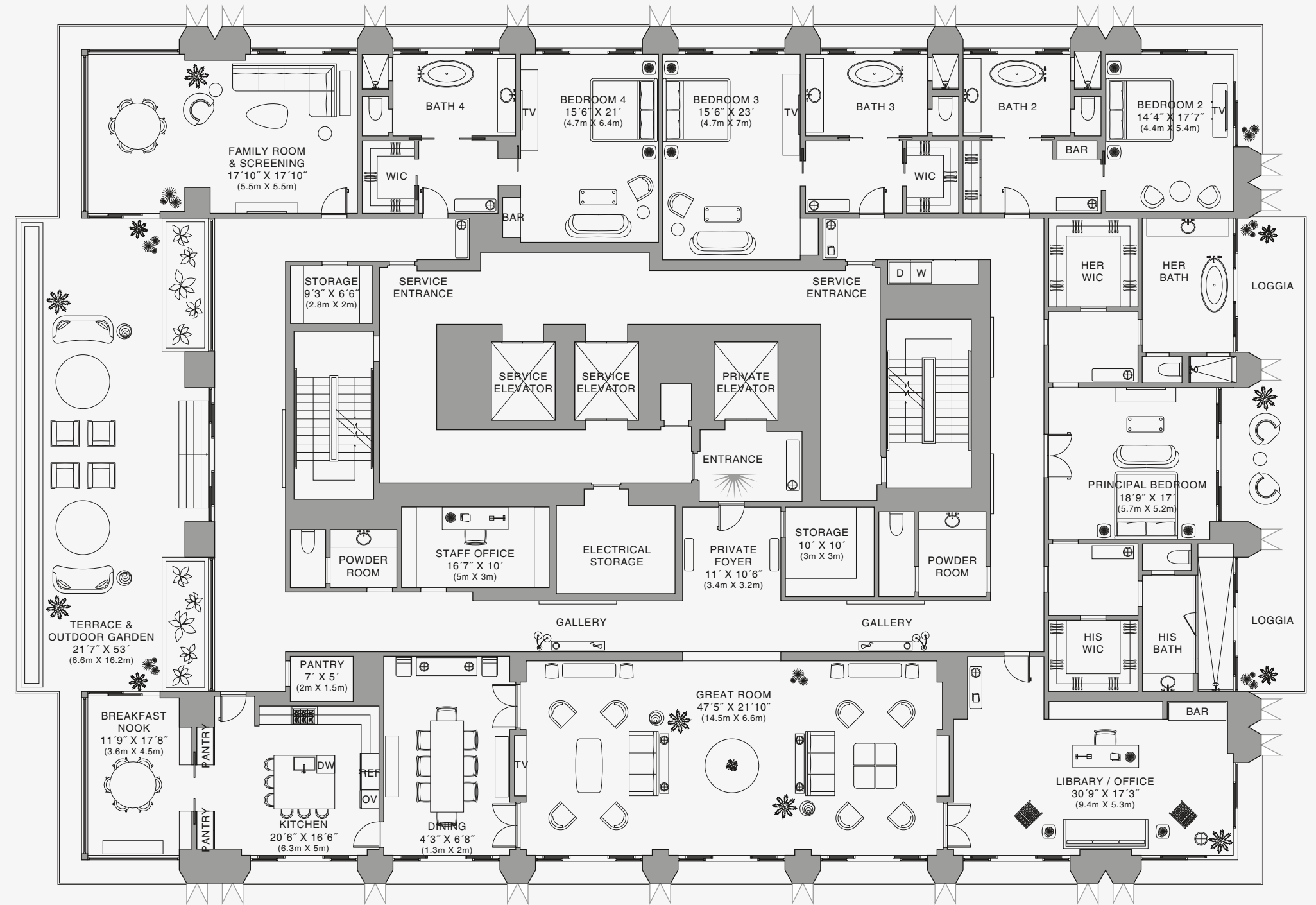
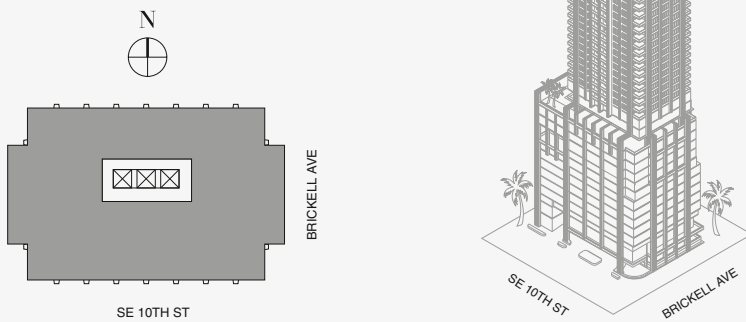
- 4 Bedrooms
- 5 Bathrooms
- 2 Powder Rooms

SQUARE FOOTAGES (SQUARE METERS)

- Indoor: 9,780 SQF (909 SM)
- Outdoor: 1,370 SQF (127 SM)
- Total: 11,150 SQF (1036 SM)

FEATURES

- 888 Penthouse
- Furniture by Dolce&Gabbana
- 11' Ceiling Height
- 3 Private Loggias
- Terrace & Outdoor Garden
- 360° Views



Biscayne Bay

Stated dimensions are measured to the exterior boundaries of the exterior walls and the centerline of interior demising walls and in fact vary from the dimensions that would be determined by using the description and definition of the "Unit" set forth in the Declaration (which generally only includes the interior airspace between the perimeter walls and excludes interior structural components). For your reference, the area of the Unit, determined in accordance with those defined unit boundaries, is set forth on Exhibit "3" to the Declaration of Condominium. Note that measurements of rooms set forth on this floor plan are generally taken at the greatest points of each given room (as if the room were a perfect rectangle), without regard for any cutouts. Accordingly, the area of the actual room will typically be smaller than the product obtained by multiplying the stated length times width. All dimensions are approximate and may vary with actual construction, and all floor plans and development plans are subject to change. The Condominium is not owned, developed or sold by Dolce & Gabbana S.r.l or any of its affiliates (the "Brand"). Developer uses Dolce & Gabbana marks pursuant to a license agreement with the Brand, terminable according to its terms. The Brand assumes no responsibility or liability in connection with the project, and makes no representation or warranty in respect thereof.

888 Penthouse

